



📍 6 Cyprus Terrace, Devizes, Wiltshire, SN10 1JR

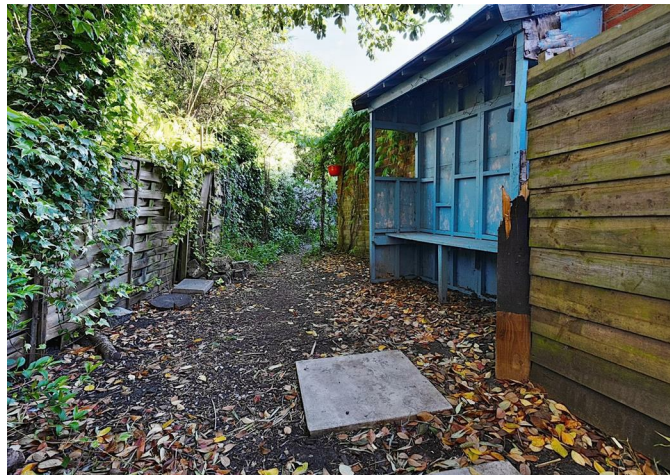
🏠 Guide Price £230,000

Offered to the market with no onward chain, this deceptively spacious, 3-bedroom, double fronted, end of terrace cottage is situated just a short, level walk to all the amenities on offer in Devizes town centre.

- NO ONWARD CHAIN
- 3-bedrooms
- End of terrace cottage
- Courtyard and further garden space
- Cellar
- 3-reception rooms
- Modern fitted family bathroom
- Short level walk to town centre

🏡 Freehold

🏠 EPC Rating D



A deceptively spacious and characterful end of terrace cottage, offering versatile accommodation over two floors and measuring approximately 1,327 sq ft. Offered to the market with no onward chain.

This well-presented three-bedroom home combines period charm with generous proportions, making it ideal for a range of buyers, including families, couples, and downsizers. The ground floor comprises two inviting reception rooms and a separate dining room, offering flexibility for living and entertaining. The kitchen is positioned to the rear with a useful adjoining utility area and access to the courtyard garden.

Upstairs, there are three good-sized bedrooms and a well-appointed modern family bathroom, all accessed off a central landing. The principal bedroom is particularly spacious, while Bedroom three could also serve well as a home office or nursery.

The lower ground floor houses a cellar, a valuable addition for storage or potential conversion (subject to the necessary consents).

Externally, the property enjoys a private courtyard area immediately to the rear, with a path leading up to an additional section of garden — perfect for seating, planting, or even a small vegetable plot.

Situated within easy reach of Devizes town centre, local amenities, Kennet & Avon canal and countryside walks, this is a charming and surprisingly spacious home with much to offer.

Situation

Cyprus Terrace stands close to the Kennet and Avon Canal and is conveniently located for Devizes town centre. This thriving market town boasts a wealth of amenities including schools for all ages, a leisure centre, theatre, museum and bustling weekly market. The Kennet and Avon Canal which passes through Devizes also provides walking and fishing facilities and the major centres of Salisbury, Swindon, Bath, Chippenham and Marlborough are all within a 30 mile radius.

Property information

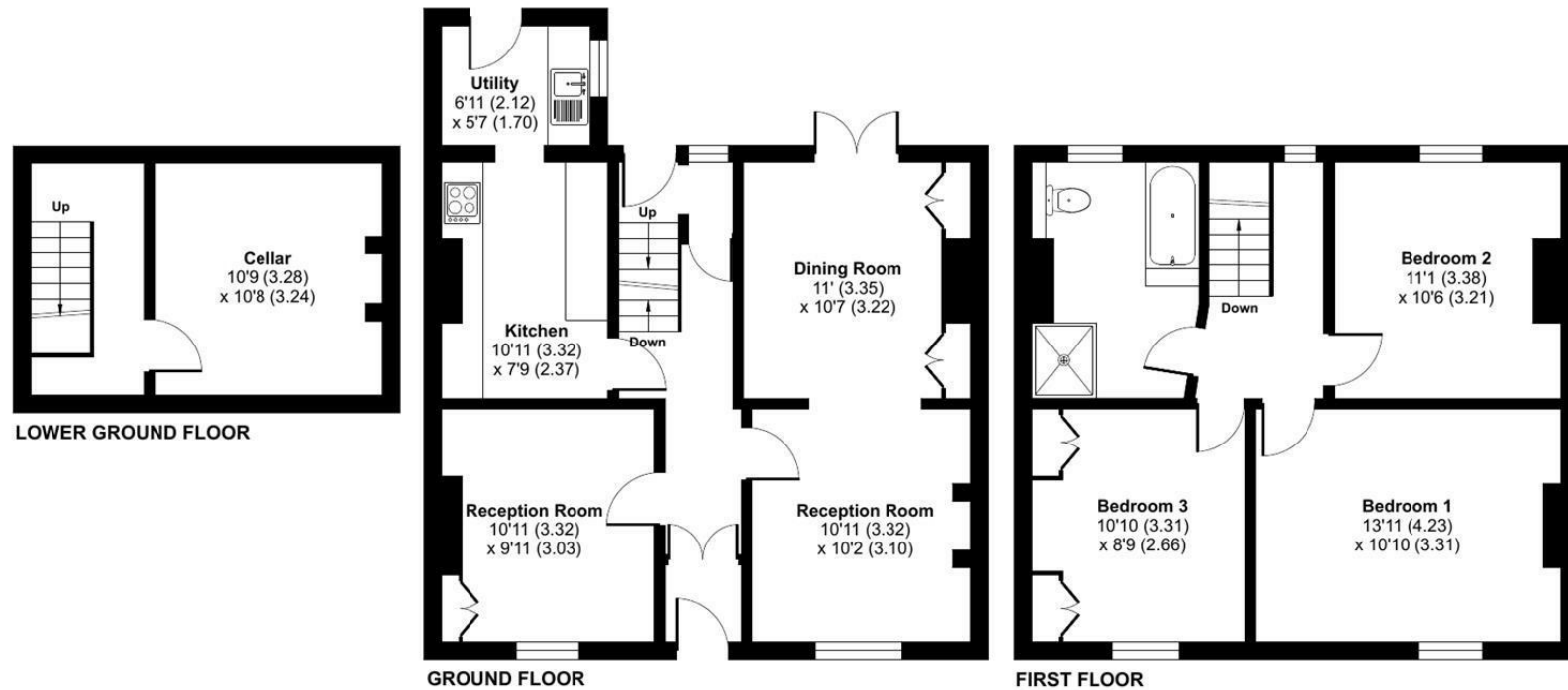
We are advised that all mains services are connected. Whilst no allocated parking there are parking options available nearby.
Tenure: Freehold
EPC rating: D
Council tax band: C



Cyprus Terrace, Devizes, SN10

Approximate Area = 1327 sq ft / 123.2 sq m

For identification only - Not to scale



Floor plan produced in accordance with RICS Property Measurement 2nd Edition, Incorporating International Property Measurement Standards (IPMS2 Residential). © nitchecom 2025. Produced for Strakers. REF: 1287684

Disclaimer These particulars, whilst believed to be accurate are set out as a general outline only for guidance and do not constitute any part of an offer or contract. Intending purchasers should not rely on them as statements of representation of fact, but must satisfy themselves by inspection or otherwise as to their accuracy. No person in this firm's employment has the authority to make or give any representation or warranty in respect of the property. All measurements and distances are approximate only. Your home is at risk if you do not keep up repayments on a mortgage or other loan secured on it.